

# *i-Optik*

*Better vision, Better life*

LE<sup>+</sup><sub>2.0</sub> / LE<sup>+</sup><sub>3.0</sub>

*PATTERNLESS EDGER*



# More concise interfaces

## HD touch screen

7-inch color touch screen, showing more clear images and allowing operators access to all the functions with just simple click on the screen.

## Fast access to edging jobs

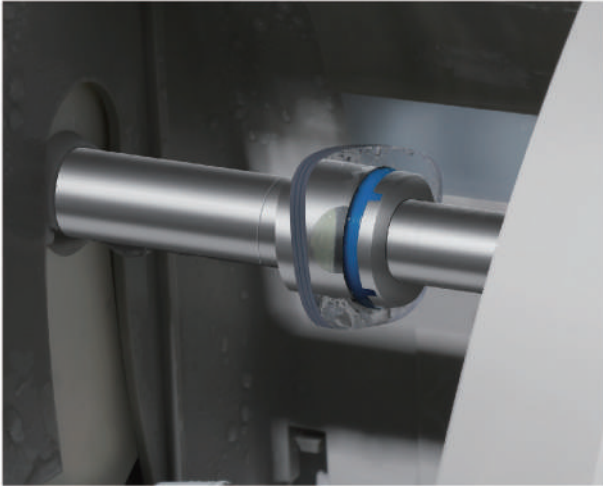
Intuitive operation interface, all processing parameters can be set according to the prompts of the equipment.

## Memory for maximum 500 shapes

Convenient shape saving and entry to shape database ensures higher efficiency.



# INCREASE OF EFFICIENCY



## Intelligent Edging Algorithm

- Intelligent edging according to pre-set parameters.
- During edging process, operators can stop anytime for real-time detail adjustment.
- Auto bevel/groove mode for common frames, makes the edging process convenient and efficient.



## Excellent Processing Program

- Various lens processing modes and editing functions of size and shape.
- Remarkable bevel and groove effect for precise fitting.

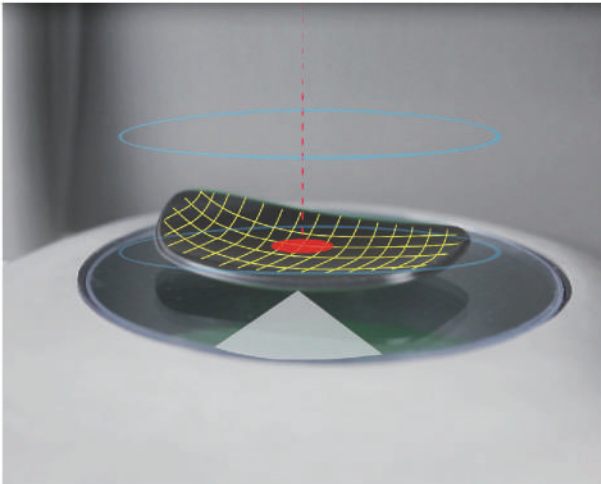
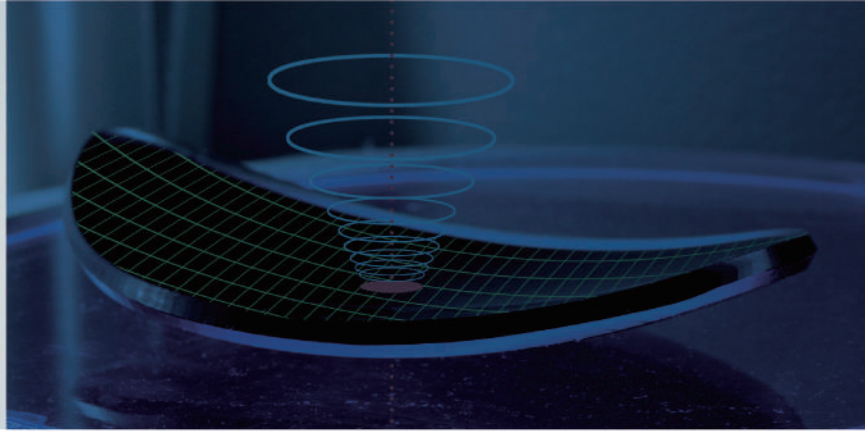


## Accurate axial position

- Automatic speed adjustment according to different lens material, shape and thickness, minimizing axis error and ensuring high precision.
- Provide optical centering, geometric alignment and other ways to enhance the accuracy of axis position.
- Special anti-slip adapter and electromagnetic technology for clamping force control.

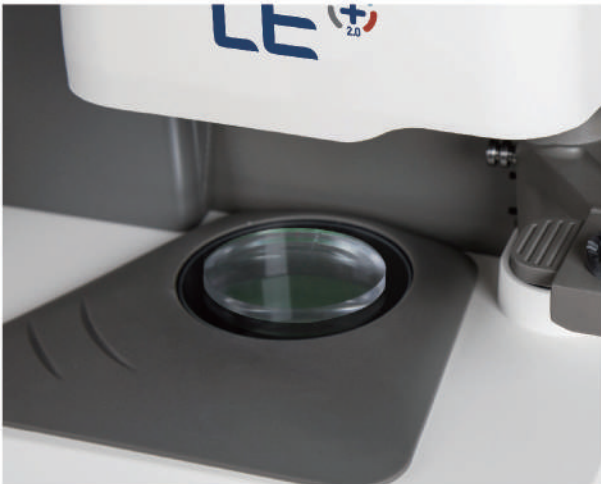


# FAST OPERATION



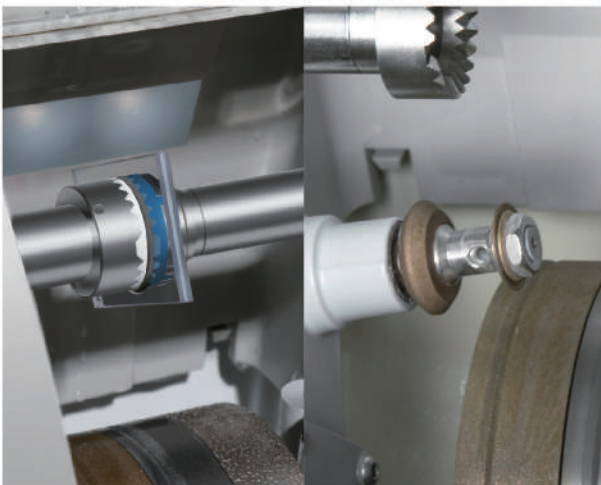
## Optical Tracing

- Focus on the center of gravity of the convex surface of the lens.
- 3D optical tracing for scanning the pattern or optical lens.
- Quick recognition of the 3D data for the edging shapes.



## Fast Blocking

- Fully digital blocker.
- Capable of blocking on both geometrical center and optical center.
- Automatic compensation for the lenses power, prism and the influence of parallax.



## Auto grooving and \*safety bevel

- Advanced technology for groove depth and position configuration.
- High precision grooving effect.
- Fully automated grooving and safety bevel function for better efficiency.

\*Safety bevel is only available for LE+3.0



The new LE+ series patternless edger has the functions of beveling, flat edge, grooving, safety bevel (LE+3.0 only) and polishing. The all-in-one design not only saves spaces, but also maximize efficiency and benefits our users.



### **Intelligent Edging**

Automatically optimize edging speed and pressure on lens edge according to lens shape and thickness, finishing the job faster without compromising edging accuracy.



### **Precise Fitting**

Ensure lens of all kinds of material perfectly fitting with the frames with precise size control and shape modifying functions.



### **Outstanding Performance**

Intuitive operator's interface, advanced data processing technology and customizing options make the edger very easy to use.

## Specification

|                          |   |
|--------------------------|---|
| Optical tracing          | Fully automated 3D optical tracing, auto recognition of lens shape and frame level  |
| Centering                | Parallax free, supports centering for almost all kinds of lenses  |
| Centering assistance     | Geometrical center, optical center or customized  |
| Shape modification       | Pattern magnifying and minifying and shape modifying  |
| Data storage             | 500 jobs  |
| Lens material            | PLA, PC, Trivex and HI lens. For lens with special material or coating, the edger mode is customizable to ensure edging precision   |
| Lens tracing             | 3D dynamic tracing  |
| Finishing                | Bevel: Graphic preview, bevel position manually adjustable<br>Grooving: configurable groove depth and width<br>Safety-bevel: front or rear surface safety bevel optional, small or big safety bevel configurable (LE+3.0 only)<br>Polishing: flat polishing and bevel polishing |
| Minimum edging diameters | Flat 17.5 mm, bevel 19.1mm, grooving 18.5 mm (according to blocker disc) , safety-bevel 21 mm   |
| Maximum edging diameter  | 80mm  |
| Screen                   | 7-inch color touch screen   |
| Size                     | 728*600*442mm   |
| Weight                   | 75kg  |
| Power consumption        | 230V AC, 50/60 Hz, or 115V AC, 50/60 Hz   |
| Power supply             | 1340 VA   |



Designs and specification can be changed without prior notice for the purpose of improvement.

Ningbo Ming Sing Optical R&D Co.,Ltd

Tel: +86 574 87305541

E-mail: [info@nbmingsing.com](mailto:info@nbmingsing.com)

Website: [www.i-optik.com](http://www.i-optik.com)

Address: No.365 Middle Jingu Road(west), Ningbo, Zhejiang, China